

THE STUDIO

A unique, urban village
events space

Party
Time

GREAT PARTIES HAPPEN IN GREAT SPACES

The Studio is the perfect party space. Located just next door to The High Field, the former architect's studio is hidden away upstairs and has been revamped with a heady mix of brushed gold and teal with flashes of neon. Nestled in the heart of Edgbaston, this urban village venue can accommodate 80 guests for a standing buffet and drinks party or, from January 2018, 60 guests seated for an informal lunch or dinner. With a fully stocked private bar and full floor to ceiling windows, The Studio offers an open, versatile space flexible for any occasion. Whether it's a lunch buffet, a drinks-only reception or a Christmas party – we look forward to working with you for your fully bespoke event.

For anyone booking in December, there will be no hire charges applied.

MENUS

We always serve the good stuff, only what we want to eat and drink ourselves. We believe in seasonality, with dishes bursting with flavour. Our pricing is flexible so talk to us about choosing a menu to compliment your event.

BREAKFAST

Full English Breakfast Sharing Style
Unlimited Tea & Coffee
£15.00pp

DELI PLATES

Spicy-glazed Chicken Wings
Chorizo & Manchego Swirls
Fish Goujons & Tartare Sauce
Smoked Salmon Pate & Granary Toast
Crispy Camembert & Fig Relish
Mushroom Pate & Croutes
Crispy Lamb, Pomegranate & Mint Salad
Toasted Pitta, Puttanesca Olives & Hummus
Baby Jackets & Sour Cream
Chips
£15.95pp

SARNIES & FRIES

Westcombe Cheddar & Tomato Chutney
Prawn & Bloody Mary Mayonnaise
Aubrey Allen 28 Day Dry-aged Beef & Horseradish
Free-range Ham & English Mustard
All served with chips & salad
£12.95pp

CHEESE PLEASE

A selection of our seasonal cheeses, apples, celery,
chutney & crackers
£7.00pp

SOMETHING SWEET

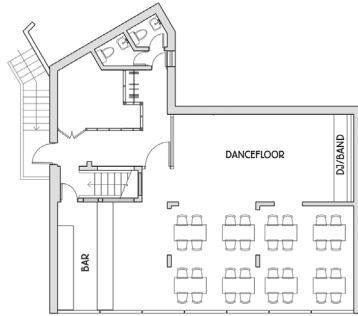
Valrhona Chocolate & Orange Tart
Sticky Bourbon Pudding
Baked Gluten-free Walnut Flapjack
£3.00pp

If you're looking for a drinks package to see your party go with a bang – ask about our buckets of beer, magnums of wine, spirits by the bottle and cocktails to share.

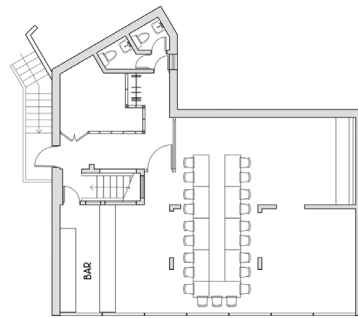
ROOM LAYOUTS

If you're looking for an original space for an informal sit down meal, buffet party or drinks reception, The Studio is flexible to your needs.

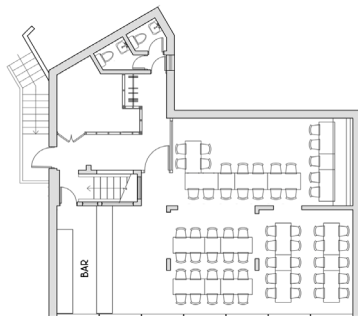
Hire a band or DJ and maximise our space for a drinks party.



A sit down meal on one table for up to 22 guests.



Group dining for up to 60 guests.



Informal sit down lunches or dinners can be booked from January. Whilst we have no parking at The Studio, there is pay and display car park just next door to The High Field. Grand Central station is a short taxi ride away and residents staying at The Town House will receive one complimentary car pass per room.



NEED SOMEWHERE TO REST YOUR HEAD?

Our 12 bedroom boutique hotel, The High Field Town House brings country house comfort and style to the hustle and bustle of city life. Just a stone's throw from The Studio, our rooms range from cosy to premium – each with its own character and different from the others. Three have free-standing roll-top baths and many can be configured as twins, super kings or family rooms. Explore the gallery on our website and let us know which room you'd like to book. We also offer fantastic rates if you're hosting your party with us too.

www.highfieldtownhouse.co.uk

GET IN TOUCH

To talk to us about your next party or business meeting, give Adrian a call on 0121 647 6466.

Throughout 2018, we'll also be hosting monthly pop-up events including; bottomless bingo, comedy nights and grown up parties. Sign up via www.highfieldedgbaston.co.uk to be the first to know about the events we've got planned.

We look forward to welcoming you soon.

Adrian, Sarah & the team

Peach is a collection of really great pubs, mainly in market towns in the heart of England, that serve good quality, fresh, honest food and drink in relaxed, welcoming surroundings. The Studio is just a short ride from Grand Central Station, Barclaycard Arena and Symphony Hall. The Genting Arena and Birmingham airport is 17 miles away.

MAKING LIFE PEACHY